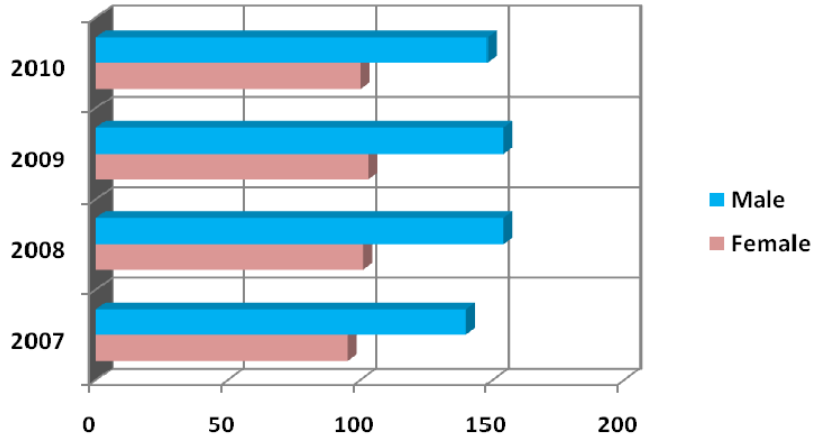
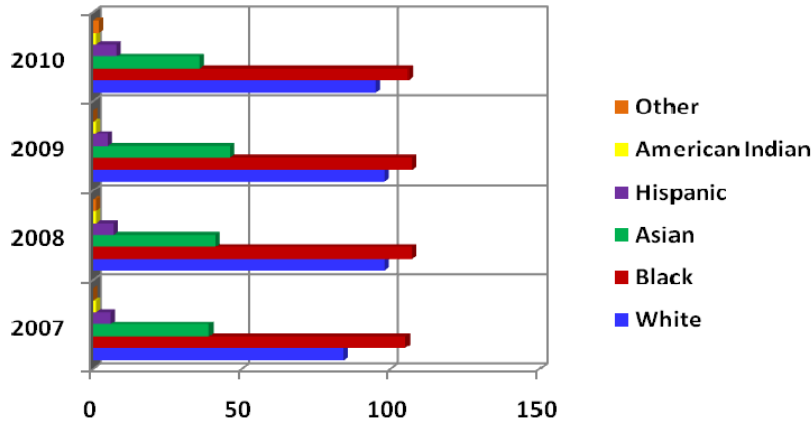


Fall 2007-2010 CUPA HR Faculty Full-time By Gender



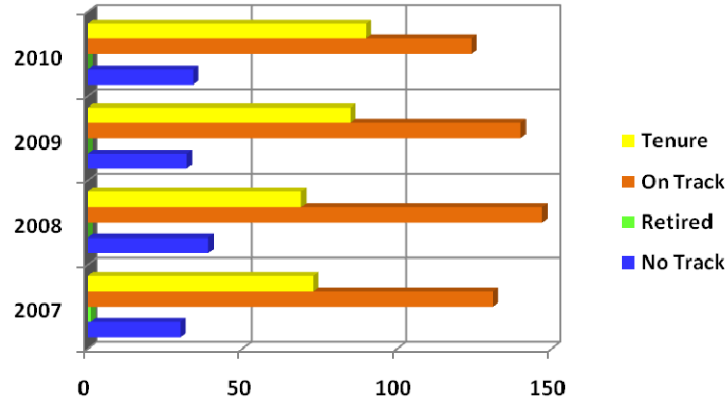
Gender	2007	2008	2009	2010
Female	95	101	103	100
Male	140	154	154	148
Total	235	255	257	248

By Race



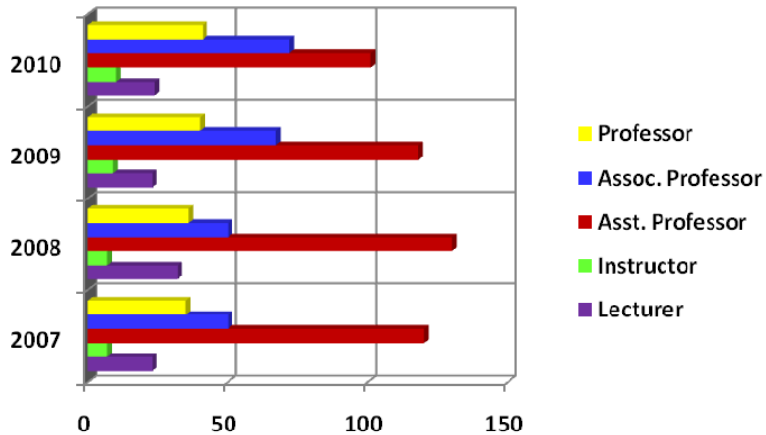
Race	2007	2008	2009	2010
White	84	98	98	95
Black	105	107	107	106
Asian	39	41	46	36
Hispanic	6	7	5	8
American Indian	1	1	1	1
Other	0	1	0	2
Total	235	255	257	248

Fall 2007-2010 CUPA HR Faculty Full-time By Tenure Status



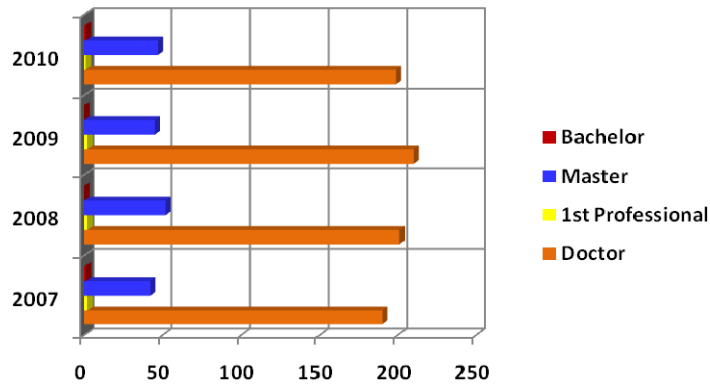
Status	2007	2008	2009	2010
No Track	30	39	32	34
Retired	1	0	0	0
On Track	131	147	140	124
Tenure	73	69	85	90
Total	235	255	257	248

By Position



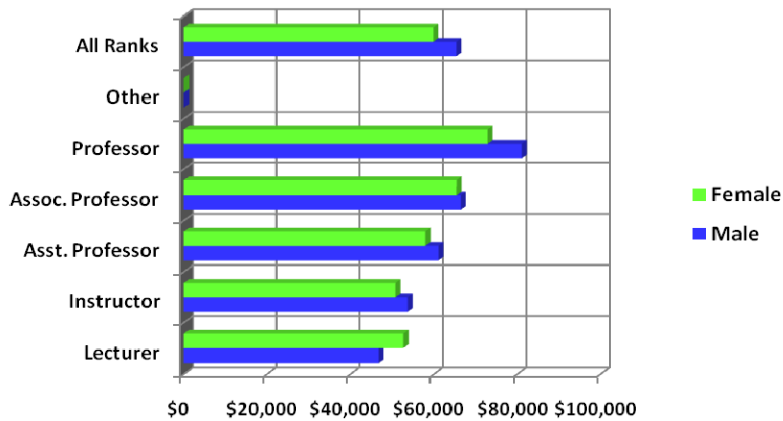
Position	2007	2008	2009	2010
Lecturer	23	32	23	24
Instructor	7	7	9	10
Asst. Professor	120	130	118	101
Assoc. Professor	50	50	67	72
Professor	35	36	40	41
Total	235	255	257	248

Fall 2007-2010 CUPA HR Faculty Full-time By Degree



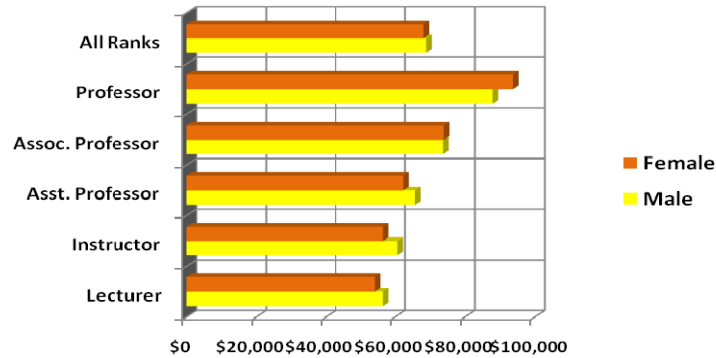
Degree	2007	2008	2009	2010
Doctor	190	201	210	199
1 st Professional	2	2	2	1
Master	42	52	45	47
Bachelor	1	0	0	1
Total	235	255	257	248

By Fall 2007 CUPA HR Faculty Full-time By Average Salary



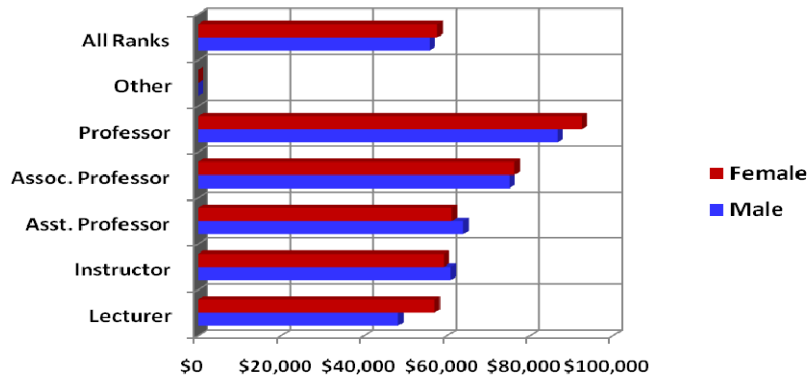
Salary	Male	Female
Lecturer	\$46,747	\$52,672
Instructor	\$53,654	\$50,748
Asst. Professor	\$61,068	\$57,934
Assoc. Professor	\$66,430	\$65,388
Professor	\$81,037	\$72,884
Other	\$0	\$0
All Ranks	\$65,359	\$59,819

Fall 2008 CUPA HR Faculty Full-time By Average Salary



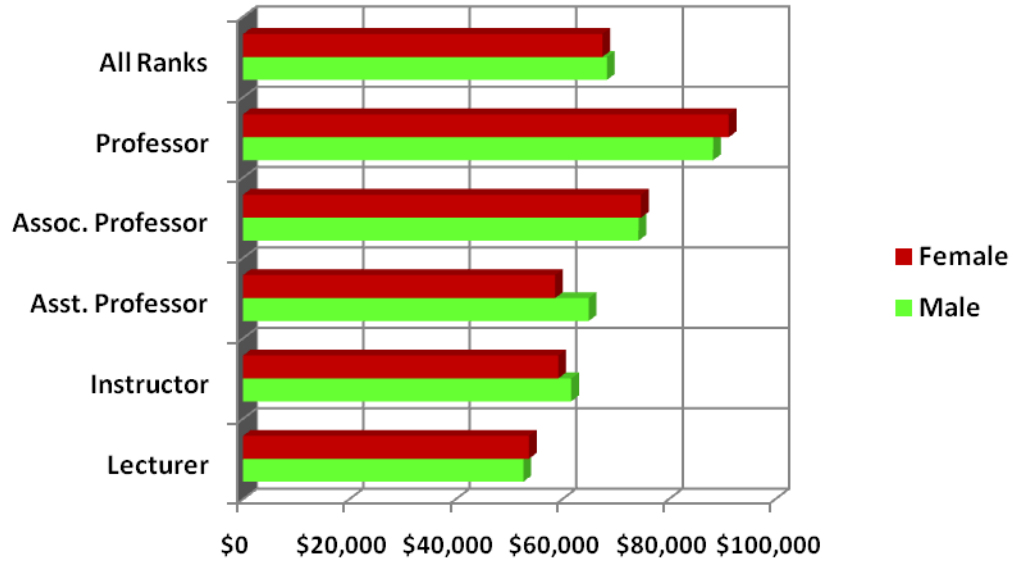
Salary	Male	Female
Lecturer	\$56,494	\$54,217
Instructor	\$60,656	\$56,473
Asst. Professor	\$65,686	\$62,335
Assoc. Professor	\$73,721	\$73,899
Professor	\$87,901	\$93,734
All Ranks	\$68,892	\$68,132

By Fall 2009 CUPA HR Faculty Full-time By Average Salary



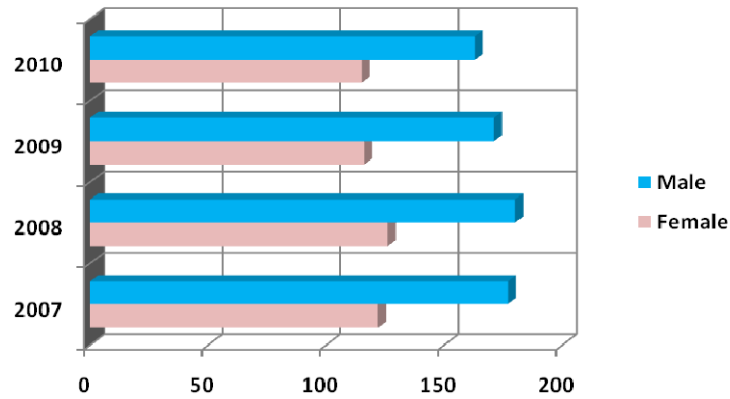
Salary	Male	Female
Lecturer	\$48,246	\$57,041
Instructor	\$60,954	\$59,304
Asst. Professor	\$63,975	\$61,218
Assoc. Professor	\$75,137	\$76,315
Professor	\$86,689	\$92,517
Other	\$0	\$0
All Ranks	\$55,834	\$57,733

Fall 2010 CUPA HR Faculty Full-time By Average Salary



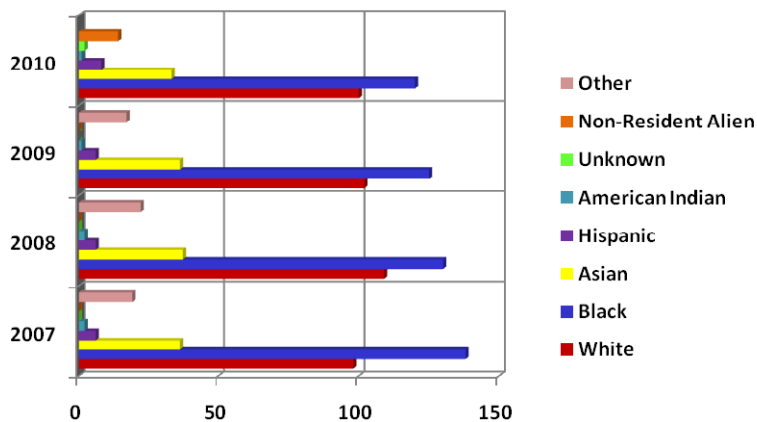
Salary	Male	Female
Lecturer	\$52,627	\$53,678
Instructor	\$61,618	\$59,200
Asst. Professor	\$64,900	\$58,599
Assoc. Professor	\$74,263	\$74,731
Professor	\$88,271	\$91,191
All Ranks	\$68,336	\$67,480

Fall 2007-2010 AAUP Faculty Full-time By Gender



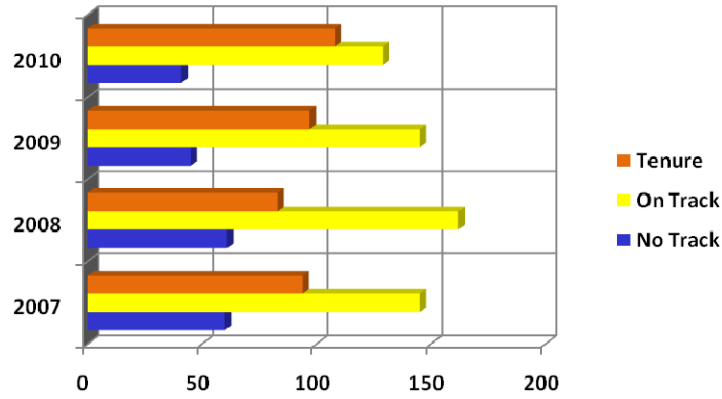
Gender	2007	2008	2009	2010
Female	122	126	116	115
Male	177	180	171	163
Total	299	306	287	278

By Race



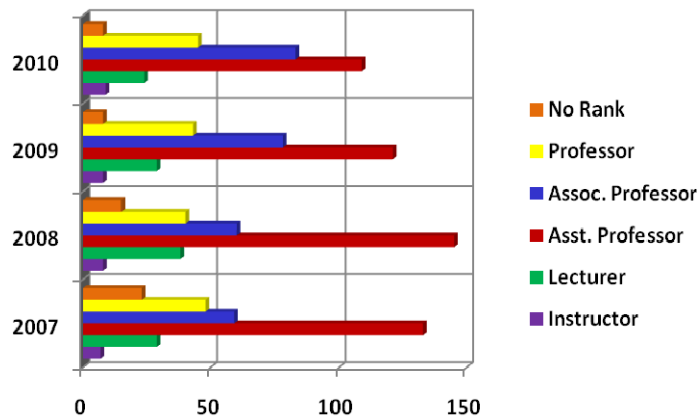
Race	2007	2008	2009	2010
White	98	109	102	88
Black	138	130	125	106
Asian	36	37	36	31
Hispanic	6	6	6	8
American Indian	2	2	1	1
Unknown	0	0	0	29
Non-Resident Alien	0	0	0	15
Other	19	22	17	0
Total	299	306	287	278

Fall 2007-2010 AAUP Faculty Full-time By Tenure Status



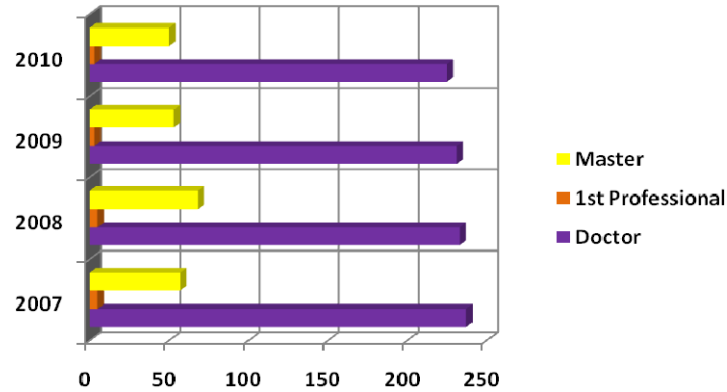
Status	2007	2008	2009	2010
No Track	60	61	45	41
On Track	145	162	145	129
Tenure	94	83	97	108
Total	299	306	287	278

By Position



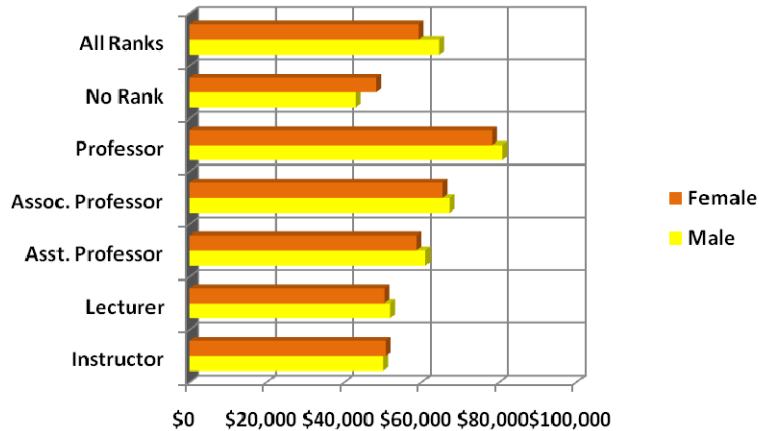
Position	2007	2008	2009	2010
Instructor	7	8	8	9
Lecturer	29	38	29	24
Asst. Professor	133	145	121	109
Assoc. Professor	59	60	78	83
Professor	48	40	43	45
No Rank	23	15	8	8
Total	299	306	287	278

Fall 2007-2010 AAUP Faculty Full-time By Degree



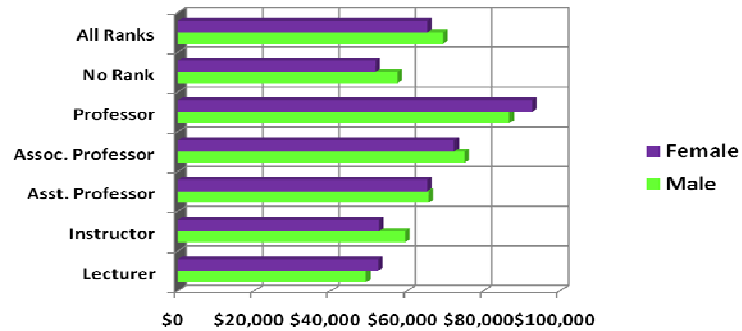
Degree	2007	2008	2009	2010
Doctor	237	233	231	225
1 st Professional	5	5	3	3
Master	57	68	53	50
Total	299	306	287	278

By Fall 2007 AAUP Faculty Full-time By Average Salary



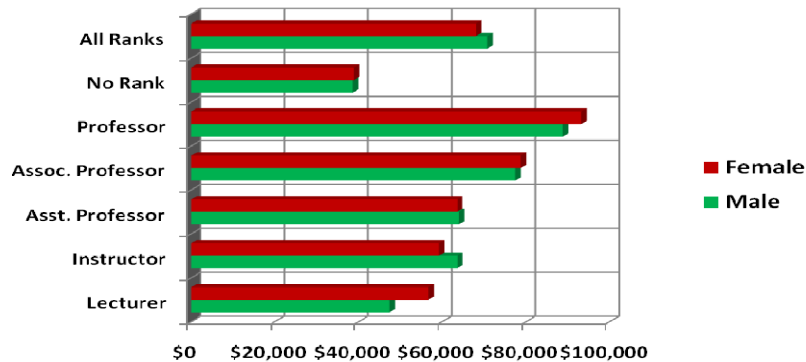
Salary	Male	Female
Instructor	\$50,081	\$50,749
Lecturer	\$51,936	\$50,451
Asst. Professor	\$61,020	\$58,702
Assoc. Professor	\$67,270	\$65,388
Professor	\$80,823	\$78,096
No Rank	\$42,997	\$48,235
All Ranks	\$64,482	\$59,278

Fall 2008 AAUP Faculty Full-time By Average Salary



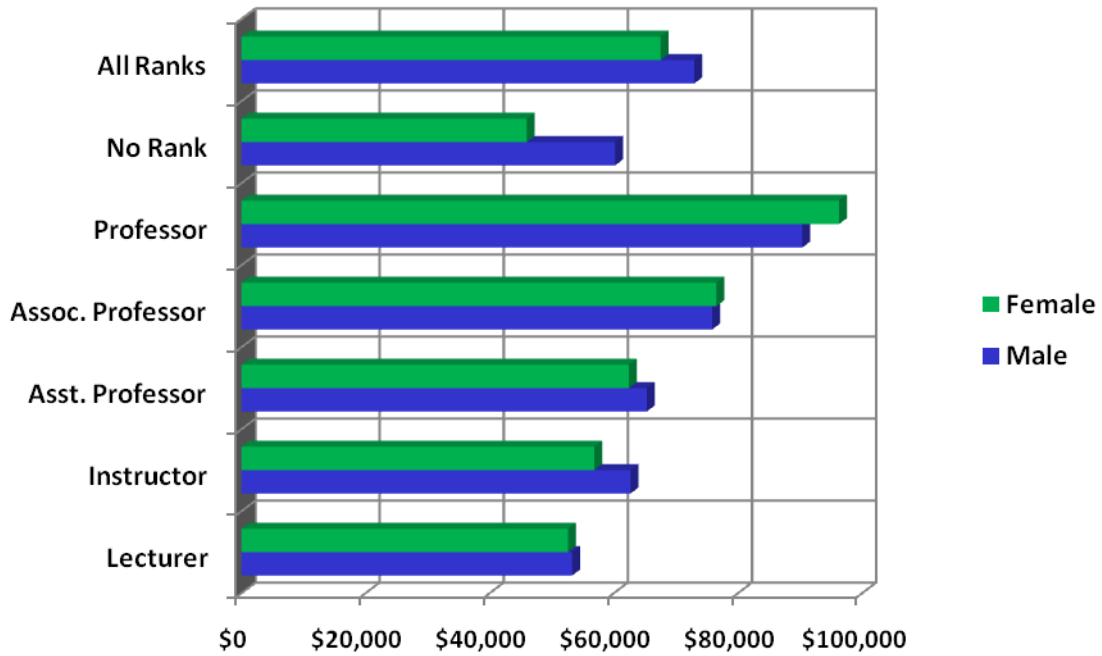
Salary	Male	Female
Lecturer	\$49,194	\$52,402
Instructor	\$59,333	\$52,664
Asst. Professor	\$65,553	\$65,152
Assoc. Professor	\$74,950	\$72,232
Professor	\$86,668	\$92,576
No Rank	\$57,484	\$51,681
All Ranks	\$69,335	\$65,152

By Fall 2009 AAUP Faculty Full-time By Average Salary



Salary	Male	Female
Lecturer	\$47,424	\$56,715
Instructor	\$63,593	\$59,304
Asst. Professor	\$64,045	\$63,560
Assoc. Professor	\$77,516	\$78,735
Professor	\$88,749	\$93,184
No Rank	\$38,652	\$38,888
All Ranks	\$70,728	\$68,132

Fall 2010 AAUP Faculty Full-time By Average Salary



Salary	Male	Female
Lecturer	\$53,275	\$52,599
Instructor	\$62,684	\$56,815
Asst. Professor	\$65,282	\$62,411
Assoc. Professor	\$75,808	\$76,519
Professor	\$90,354	\$96,251
No Rank	\$60,172	\$45,951
All Ranks	\$72,944	\$67,510